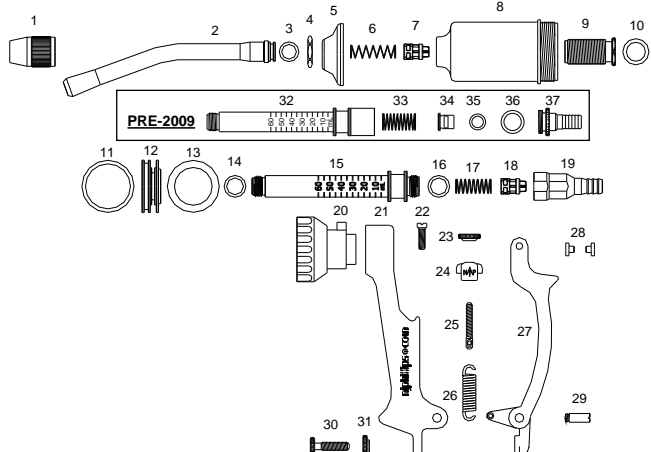




- New HFV technology for faster refill and chemical resistance.
- Compatible with most drenches on the market.
- New style piston provides easy assembly and service.



PARTS BREAKDOWN



- | | |
|------------------------------------|-------------------------------------|
| 1. Nozzle Lock Nut (SN107) | 20. Cylinder Adaptor (SH1585) |
| 2. Cattle Nozzle (TRXN116A) | 21. Handle (SA62) |
| 3. Nozzle Seal Ring (SP220) | 22. Handle Clamp Screw (SP6/N) |
| 4. Delivery Cage Lock Nut (SN456) | 23. Spring Adjustor Nut (SN60/N) |
| 5. Cylinder Shield Cap (SN408) | 24. Spring Adjustor Trunnion (SN14) |
| 6. Delivery Valve Spring (SP1200) | 25. Spring Adjustor Spindle (SN17) |
| 7. Delivery Valve (SH1446/C4) | 26. Return Spring (SP134) |
| 8. Cylinder (SH978/U) | 27. Lever (SA11/G4) |
| 9. Delivery Valve Cage (SN455) | 28. Lever Pad (2 Per) (SP5) |
| 10. Delivery Cage Seal Ring (SP98) | 29. Lever Screw (SN16) |
| 11. Piston Seal Ring (SP465) | 30. Dose Adjustor Screw (DN112) |
| 12. Piston (SH901) | 31. Dose Adjustor Lock Nut (SN12) |
| 13. Lubricating Washer (SF33) | |
| 14. Push Rod Seal Ring (SP176) | PRE-2009 APPLICATOR: |
| 15. Push Rod (SN594) | 32. Push Rod (SN454) |
| 16. Push Rod Seal Ring (SP176) | 33. Inlet Valve Spring (SP210) |
| 17. Inlet Valve Spring (SP285) | 34. Valve (SM112) |
| 18. Inlet Valve (SH1446/C4) | 35. Valve Seal Ring (SP127) |
| 19. Inlet Adaptor (SN533) | 36. Inlet Adaptor Seal Ring (SP98) |
| | 37. Inlet Adaptor (SN59) |

MODEL	DOSE RANGE	INCREMENTS	CODE
60ml	5ml – 60ml	5, 10, 15, 20, 25, 30, 35, 40, 45, 50, 55, 60ml	PAD87
60ml plus 2.5L Backpack	5ml – 60ml	5, 10, 15, 20, 25, 30, 35, 40, 45, 50, 55, 60ml	PAD76C
Also available in:			
30ml	5ml – 30ml	5, 7.5, 10, 12.5, 15, 17.5, 20, 22.5, 25, 27.5, 30ml	PAD9
30ml plus 2.5L Backpack	5ml – 30ml	5, 7.5, 10, 12.5, 15, 17.5, 20, 22.5, 25, 27.5, 30ml	PAD84C

KIT NO.	PART NAME	PART NO.
WX1326	Minor Service Kit	6, 7, 11, 12, 13, 17, 18, 33, 34, 35.
WX1327	Major Service Kit	6, 7, 8, 11, 12, 13, 17, 18, 33, 34, 35.

PLEASE ORDER BY KIT AND PART NAME

ACCESSORIES



Customise this instrument with your brand colour and logo. Contact us for details.



njphillips.com
Our expertise is in your hands.

LOCKED BAG 8, GOSFORD NSW, AUSTRALIA 2250

P +61 2 4340 2044 F +61 2 4340 1991 | E njp1@njphillips.com.au